



SAN JOSÉ · EVERGREEN  
Community College District

## FOURTH QUARTER REPORTING ON BOARD'S ENDS POLICIES

ALICE VAN OMMEREN, EDD | JOYCE LUI, PHD | HAZEL DE AUSEN, PHD  
INSTITUTIONAL EFFECTIVENESS, RESEARCH AND PLANNING

OCTOBER 9, 2018



SAN JOSÉ · EVERGREEN COMMUNITY COLLEGE DISTRICT

# GLOBAL ENDS STATEMENT & POLICIES

## GLOBAL ENDS STATEMENT

*"The San José · Evergreen Community College District exists to ensure all students, especially those with educational and/or socioeconomic challenges, will have the skills and capabilities to be successful in the next stage of their life, sufficient to justify the use of available resources."*

## STUDENT SUCCESS

The San José · Evergreen Community College District will improve student success through enhanced educational services and programs and strengthened community engagement.

*Included in Student Success:*

### TRANSFERABILITY

All students, especially under-prepared students, will achieve academic success sufficient to transfer to a four-year post-secondary institution.

### COLLEGE READINESS

Students will develop the language skills to succeed in college, the ability to analyze, synthesize, and evaluate information, and will be able to effectively communicate with others and successfully work collaboratively in culturally diverse settings.

### COLLEGE EXPERIENCE

Enrichment opportunities will exist to enhance the learning environment and support student success.

### DEGREE AND CERTIFICATE COMPLETION

Students will complete degrees and certificates to enter the workforce.



SAN JOSÉ · EVERGREEN COMMUNITY COLLEGE DISTRICT

# GLOBAL ENDS STATEMENT & POLICIES

## GLOBAL ENDS STATEMENT

*"The San José · Evergreen Community College District exists to ensure all students, especially those with socioeconomic challenges, will have the skills and capabilities to be successful in the next stage of their life, sufficient to justify the use of available resources."*

## COMMUNITY IMPACT

As a leader in the Silicon Valley, the San José · Evergreen Community College District will be an active partner with civic and other community leaders to create a strong economy and foster social-economic equity and social justice.

*Included in Community Impact:*

### → CAREER DEVELOPMENT

Students will acquire skills sufficient to get, keep and progress in jobs with local employers, particularly in high wage/high growth areas, for all students, especially for: under-prepared students; older displaced students; and young people at the start of their careers.

### → COMMUNITY, BUSINESS, INDUSTRY AND TRADES PARTNERSHIPS/COLLABORATIONS

The District will collaborate with business, industry, and the trades for high employment in quality jobs through job placement, internships, mentorships and philanthropic development.



# 1

## STUDENT SUCCESS (Feb. 13, 2018)

*Degree and Certificate Completion, and Transferability*

#	Measurement
1.1	Number of AA, AS, ADT Degrees
1.2	Number of CTE and non-CTE Certificates
1.3	Transfer Level Course Success Rate
1.4	Percent Transfer Prepared
1.5	CSU/UC Acceptance Rates
1.6	Number of Transfers
1.7	Transfer Rate



# 2

## COMMUNITY IMPACT (April 10, 2018)

*Career Development*

#	Measurement
2.1	CTE Success Rate
2.2	CTE Course Completion Rate
2.3	Number of CTE Degrees/Certificates
2.4	Skills Builder Metric
2.5	Employed After Exit
2.6	Job Related to Program of Study
2.7	Median Earnings After Exit/Award
2.8	Success in passing licensing exams



# 3

## COMMUNITY IMPACT (July 10, 2018)

*Community, Business, Industry and Trades Partnerships/Collaborations*

#	Measurement
3.1	Number of Dual Enrollments
3.2	Number of internships/work experience
3.3	Number of apprenticeships
3.4	Number of partnerships/collaborations
3.5	Amount of grant funding
3.6	Amount of fundraising (Foundation)



# 4

## STUDENT SUCCESS (Oct. 9, 2018)

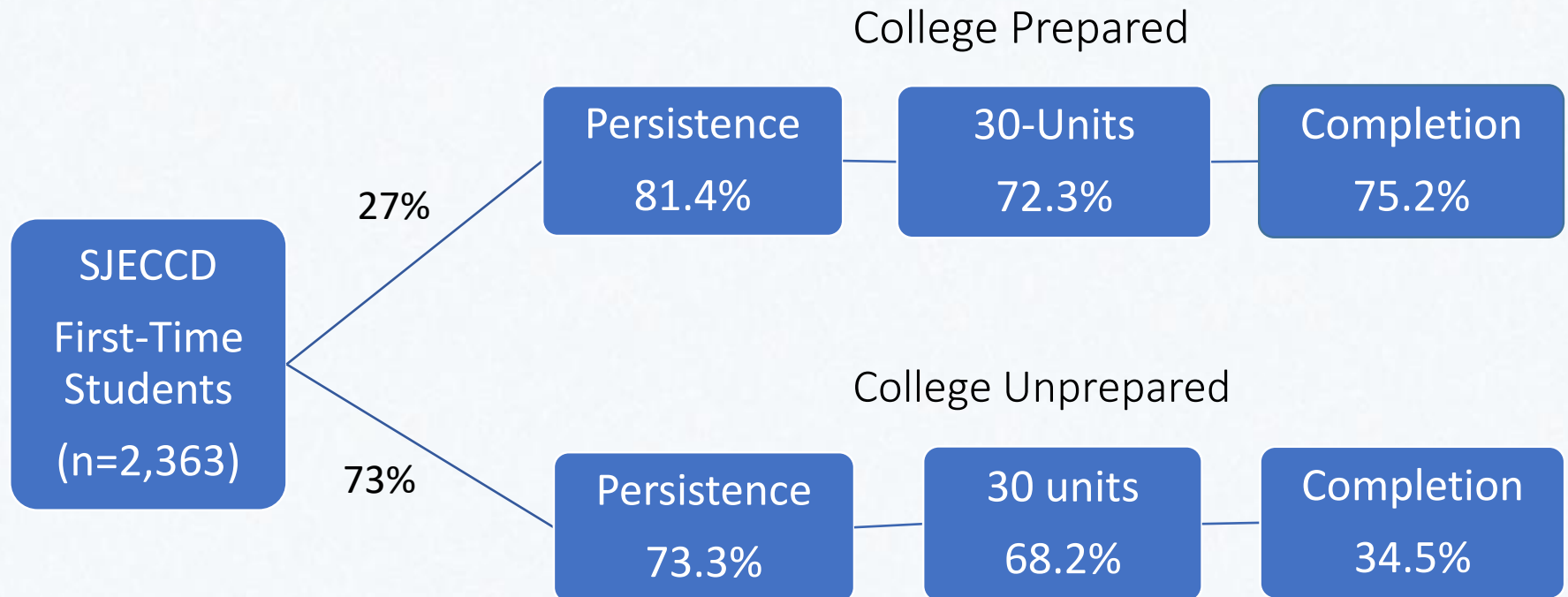
*College Experience and College Readiness*

#	Measurement
<i>College Readiness</i>	
4.1	Completion of Basic Skills
4.2	Remedial Rate for English/Math
4.3	Successful Transfer Level Math/English in Year One
4.4	Students with 12+ units in Year One
<i>College Experience</i>	
4.5	Diversity of staff and faculty
4.6	Employee Satisfaction
4.7	Clery Act reporting
4.8	Student Engagement

# FRAMEWORK FOR QUARTERLY REPORTING

# ENDS POLICY MEASUREMENTS

# COLLEGE READINESS



- 4.1 Completion of Basic Skills  
*(Basic Skills Tracker on the DataMart)*
- 4.2 Remedial Rate for English/Math  
*(Student Success Scorecard)*
- 4.3 Transfer Level Math/English in Year One  
*(Student Success Scorecard)*
- 4.4 Twelve+ Units in Year One  
*(Guided Pathways in the Launchboard)*

Starting Remedial Course	Fall 2012-15	Fall 2013-16	Fall 2014-17
Math - One Level Below	34%	35%	29%
Math - Two Levels Below	16%	19%	15%
Math - Three Levels Below	8%	8%	10%
English – One Level Below	50%	42%	41%
English – Two Levels Below	33%	31%	25%

## SAN JOSE CITY COLLEGE

---

# COMPLETION OF BASIC SKILLS

*Source: Basic Skills Tracker, DataMart (CCCCO)*

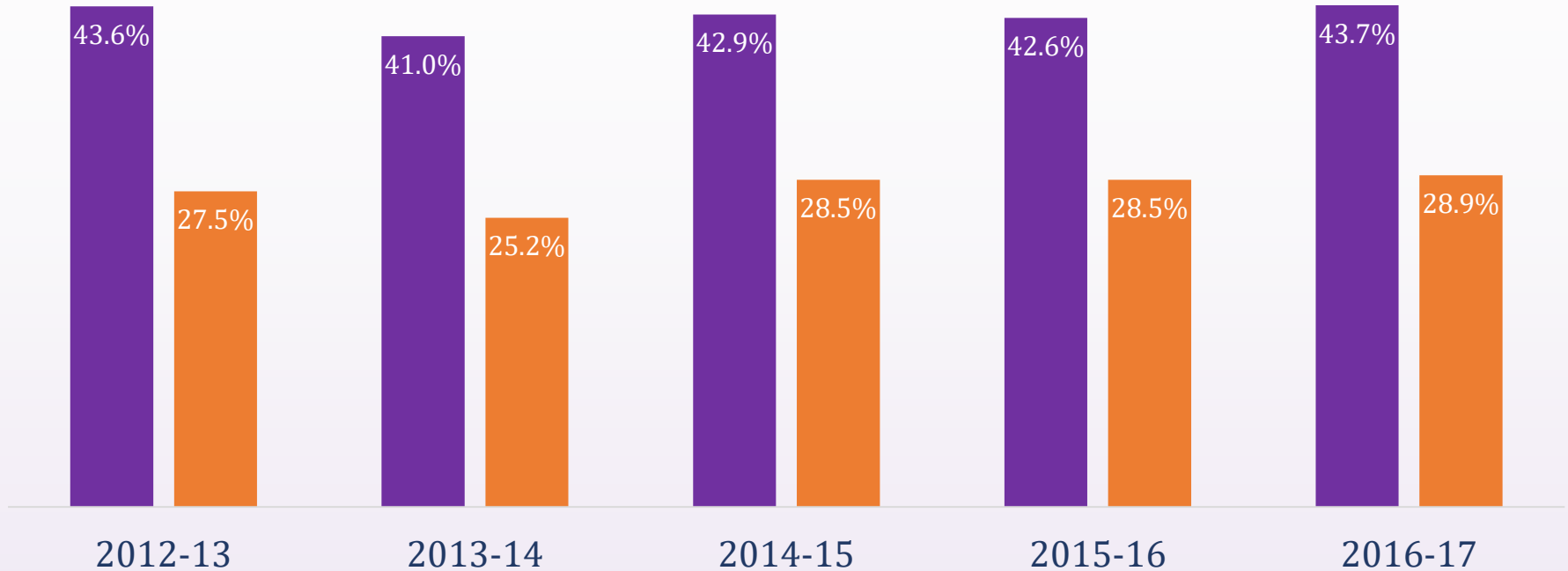
Starting Remedial Course	Fall 2012-15	Fall 2013-16	Fall 2014-17
Math - One Level Below	50%	47%	50%
Math - Two Levels Below	26%	21%	30%
Math - Three Levels Below	8%	10%	11%
English – One Level Below	58%	49%	57%
English – Two Levels Below	45%	35%	42%
English – Three Levels Below	24%	21%	22%

## EVERGREEN VALLEY COLLEGE COMPLETION OF BASIC SKILLS

*Source: Basic Skills Tracker, DataMart (CCCCO)*



■ English ■ Math

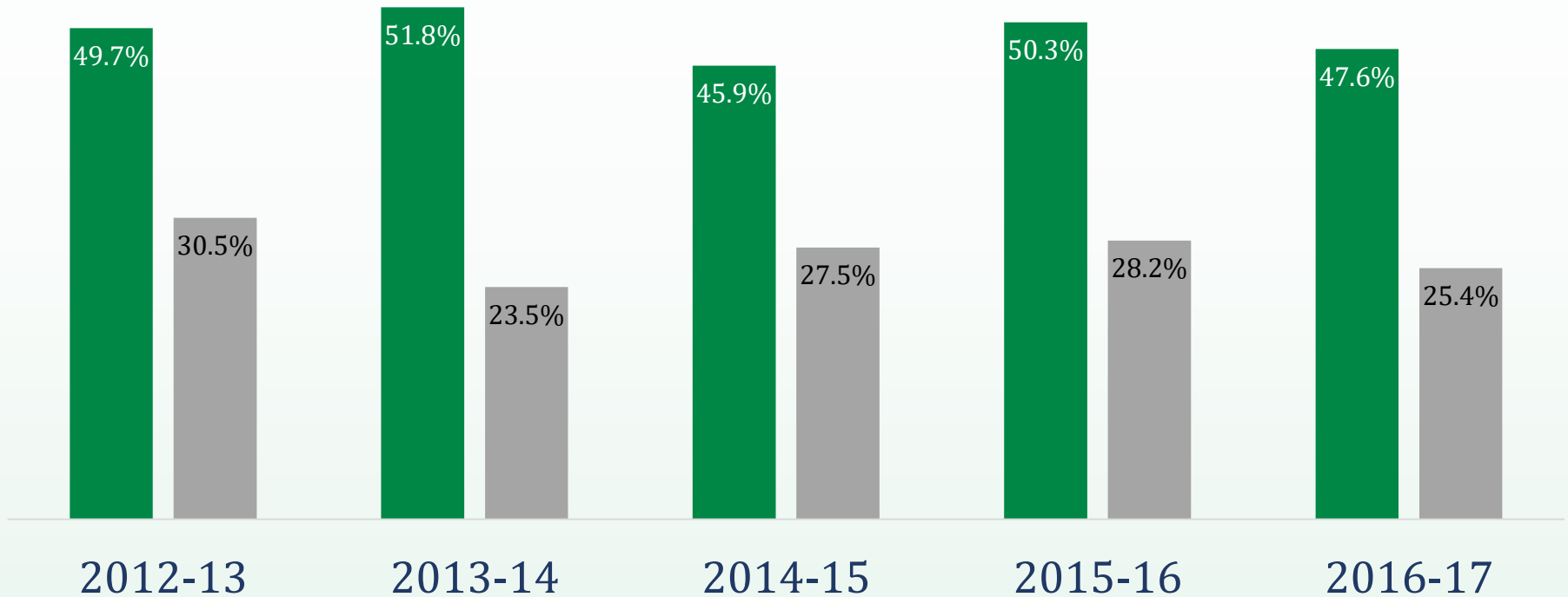


SAN JOSE CITY COLLEGE

## REMEDIAL RATE FOR ENGLISH/MATH

Source: 2018 Student Success Scorecard (CCCCO)

■ English ■ Math



## EVERGREEN VALLEY COLLEGE

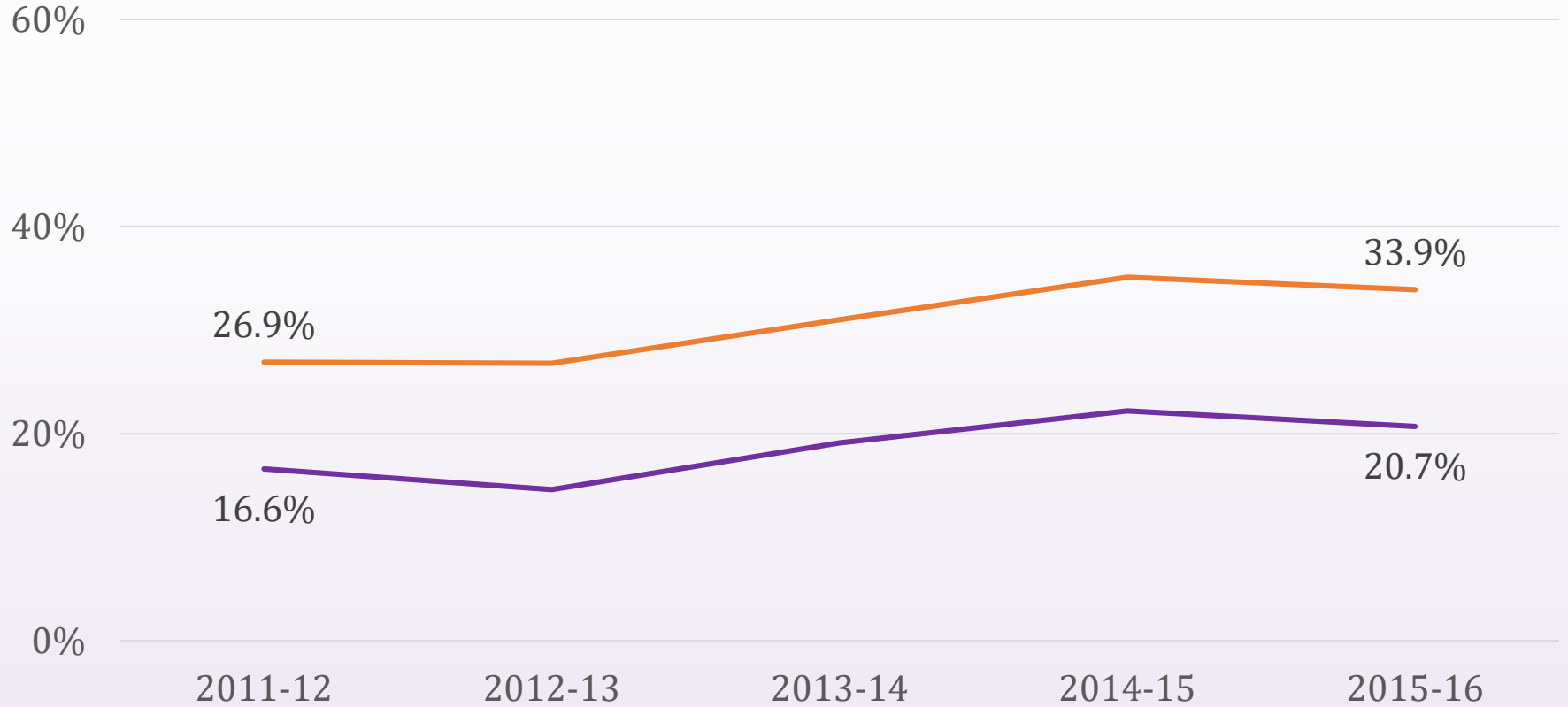
---

### REMEDIAL RATE FOR ENGLISH/MATH

*Source: 2018 Student Success Scorecard (CCCCO)*

## Transfer Level Math/English in Year One

— 1-Year MATH — 1-Year ENGLISH



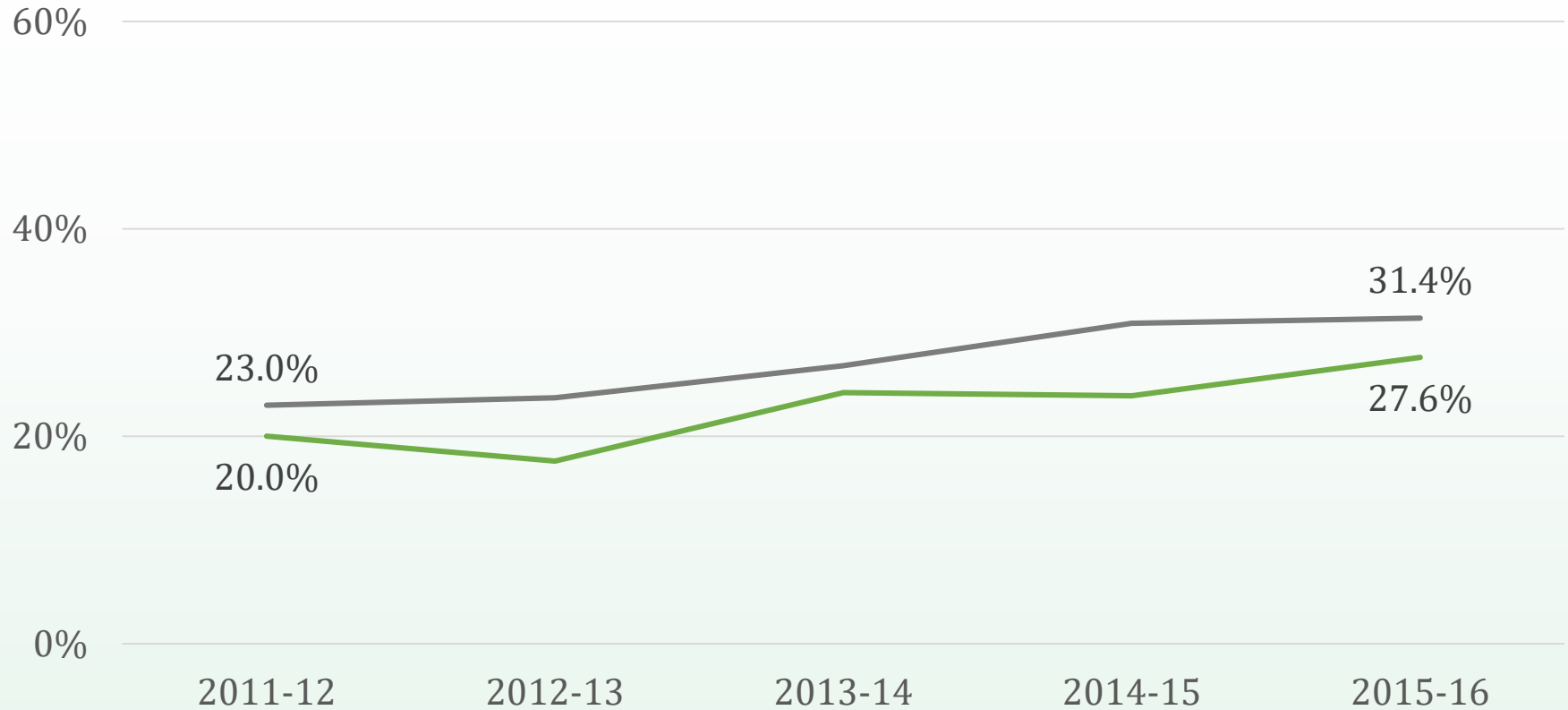
SAN JOSE CITY COLLEGE

**TRANSFER LEVEL ACHIEVEMENT RATE**

*Source: 2018 Student Success Scorecard (CCCCO)*

## Transfer Level Math/English in Year One

— 1-Year MATH — 1-Year ENGLISH



EVERGREEN VALLEY COLLEGE

**TRANSFER LEVEL ACHIEVEMENT RATE**

*Source: 2018 Student Success Scorecard (CCCCO)*

Number of Units Earned	2013-14	2015-16	2016-17
6+ Units in First Term	35%	31%	32%
12+ Units in First Term	10%	9%	12%
15+ Units in First Term	4%	4%	5%
15+ Units in Year One	25%	20%	23%
24+ Units in Year One	10%	8%	10%
30+ Units in Year One	5%	4%	5%

## SAN JOSE CITY COLLEGE

---

### SUCCESSFUL UNITS EARNED

*Source: Guided Pathways Metrics, Launchboard (CCCCO)*



Number of Units Earned	2013-14	2015-16	2016-17
6+ Units in First Term	29%	31%	29%
12+ Units in First Term	7%	8%	8%
15+ Units in First Term	2%	2%	1%
15+ Units in Year One	21%	22%	23%
24+ Units in Year One	7%	9%	9%
30+ Units in Year One	2%	4%	3%

## EVERGREEN VALLEY COLLEGE

---

### SUCCESSFUL UNITS EARNED

*Source: Guided Pathways Metrics, Launchboard (CCCCO)*

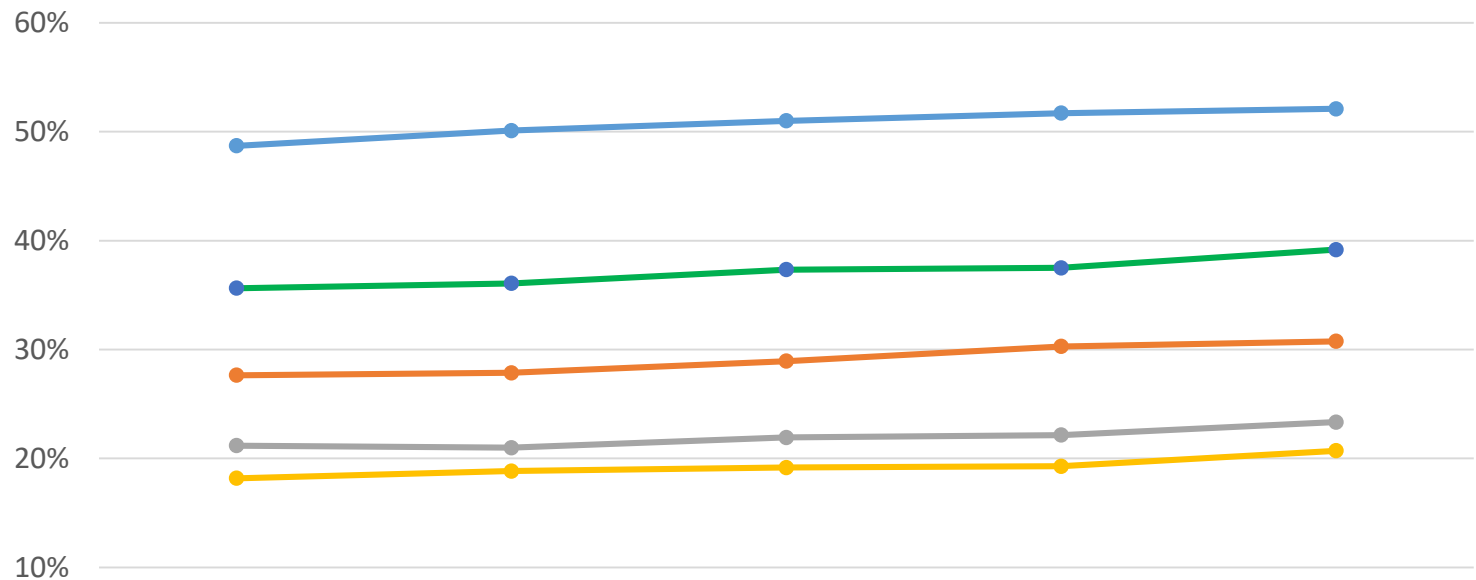
## College Experience

- 4.5 Diversity of Staff and Faculty
- 4.6 Employee Satisfaction
- 4.7 Clery Act Reporting
- 4.8 Student Engagement

# DIVERSITY OF STAFF AND FACULTY - STATEWIDE

\*Under-Represented Minority – African American, American Indian, Hispanic & Pacific Islander

Under-Represented Minority\* Percentages by Students and Employee Types (Statewide CCCs)



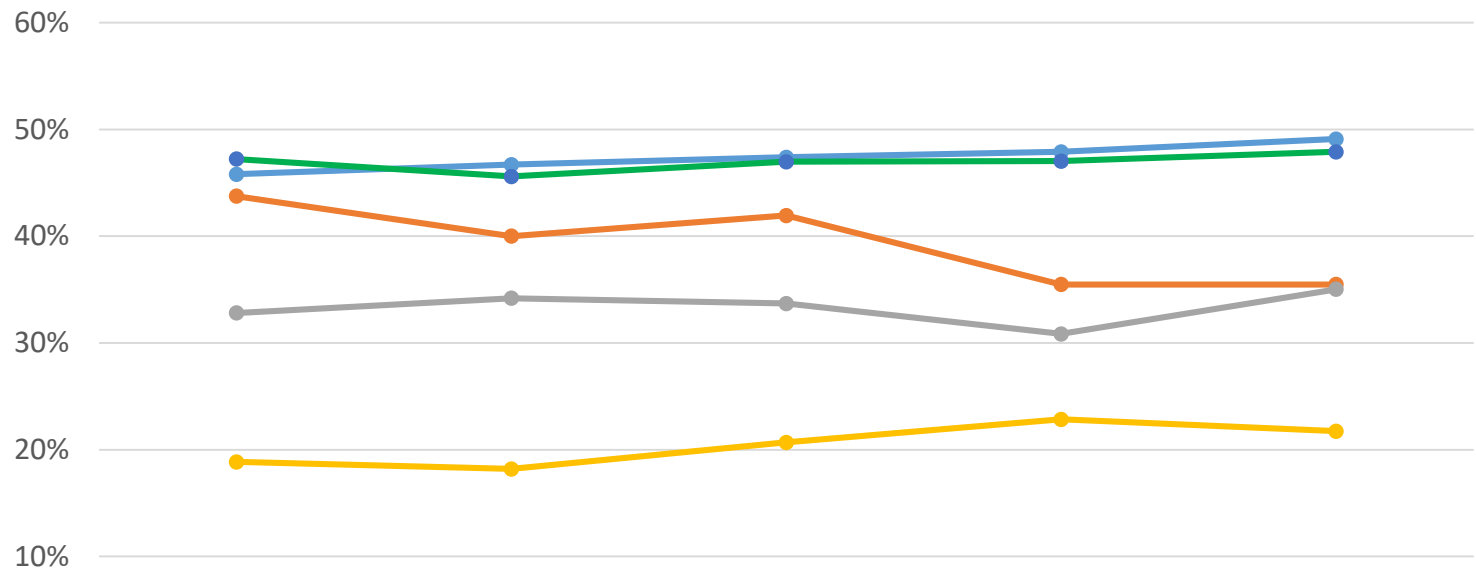
	Fall 2013	Fall 2014	Fall 2015	Fall 2016	Fall 2017
Students	48.7%	50.1%	51.0%	51.7%	52.1%
Administrators	27.6%	27.9%	28.9%	30.3%	30.8%
Academic Tenured	21.2%	21.0%	21.9%	22.1%	23.3%
Academic Temporary	18.2%	18.8%	19.2%	19.3%	20.7%
Classified	35.6%	36.1%	37.3%	37.5%	39.2%

SAN JOSÉ · EVERGREEN COMMUNITY COLLEGE DISTRICT

# DIVERSITY OF STAFF AND FACULTY - SJECCD

\*Under-Represented Minority – African American, American Indian, Hispanic & Pacific Islander

Under-Represented Minority\* Percentages by Students and Employees Types at SJECCD

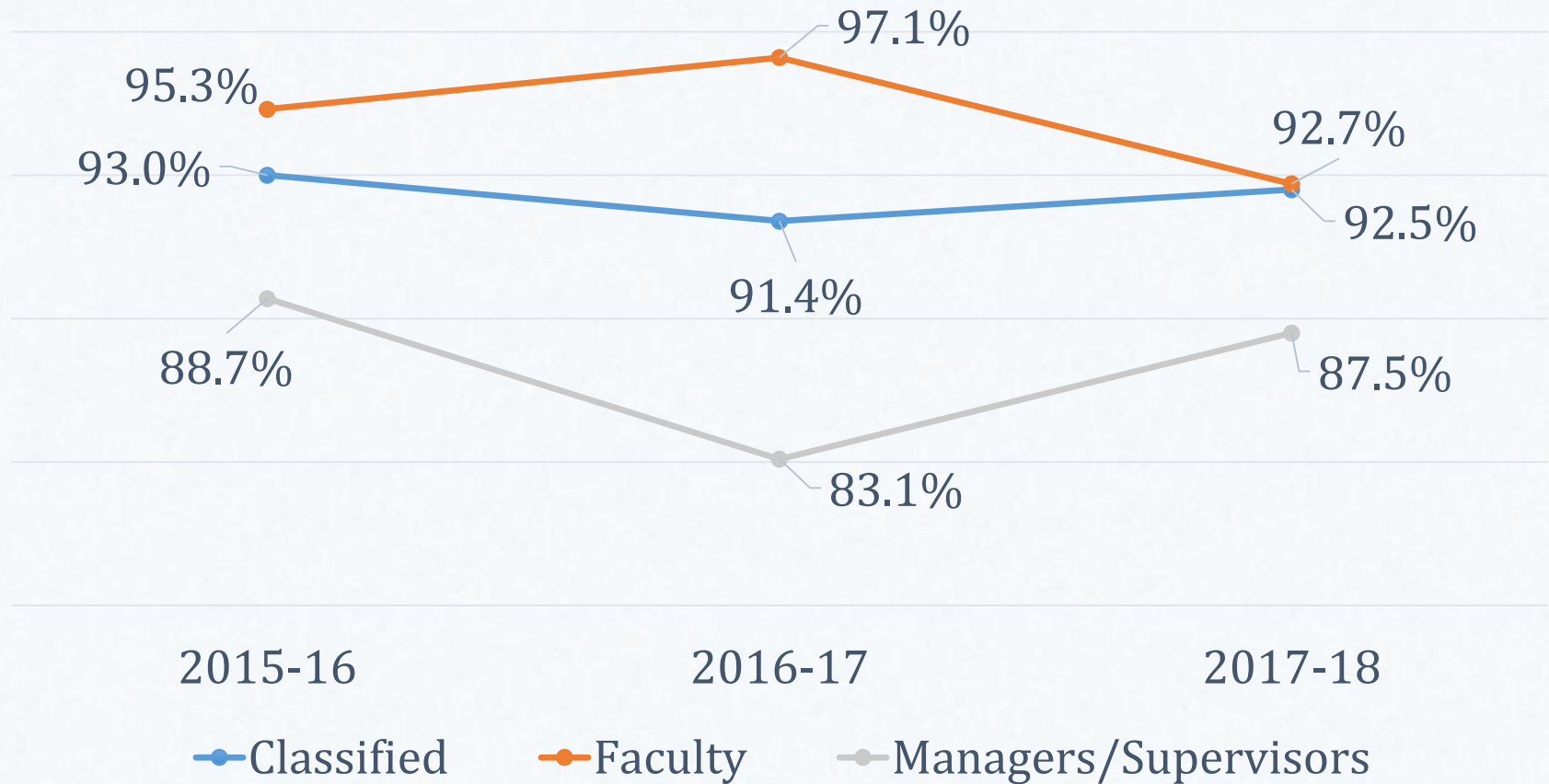


	Fall 2013	Fall 2014	Fall 2015	Fall 2016	Fall 2017
Students	45.8%	46.7%	47.4%	47.9%	49.1%
Administrators	43.8%	40.0%	41.9%	35.5%	35.5%
Academic Tenured	32.8%	34.2%	33.7%	30.8%	35.0%
Academic Temporary	18.9%	18.2%	20.7%	22.8%	21.7%
Classified	47.2%	45.6%	47.0%	47.0%	47.9%

SAN JOSÉ · EVERGREEN COMMUNITY COLLEGE DISTRICT

# EMPLOYEE RETENTION RATES

*Industry Standard: 90%*





## Clery Act Reporting

- Act named after Jeanne Clery (1990)
- Federal statute to disclose crime
- Annual Campus Security Report
- Includes domestic/dating violence
- U.S. Department of Education review
- Also keep daily log of all reported crimes.

Criminal Offenses on Campus	2015	2016	2017
Rape	0	0	0
Fondling	0	1	0
Aggravated Assault	0	0	0
Burglary	2	0	6
Motor Vehicle Theft	1	3	4

## SAN JOSE CITY COLLEGE

---

# CLERY ACT REPORTING

*Source: 2018 Annual Security Report (SJECCD Police Department)*

Criminal Offenses on Campus	2015	2016	2017
Rape	0	0	0
Fondling	0	0	1
Aggravated Assault	0	2	0
Burglary	3	0	1
Motor Vehicle Theft	1	0	3

EVERGREEN VALLEY COLLEGE

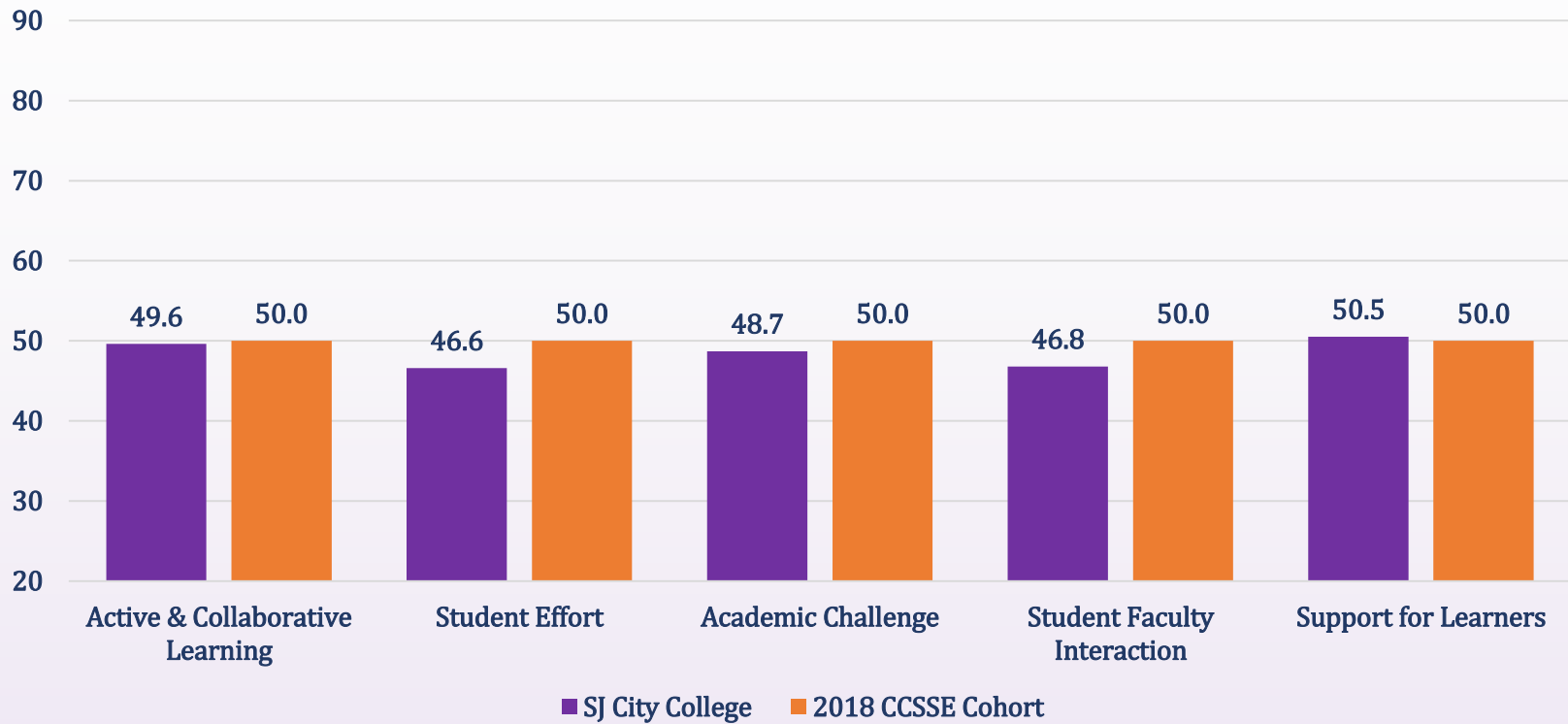
## CLERY ACT REPORTING

*Source: 2018 Annual Security Report (SJECCD Police Department)*

## Survey of Student Engagement (CCSSE)

- College experience relates to outcomes
- CCSSE is a well established survey tool
- Information on student engagement
- Administered every two years
- Used for benchmarking
- Also diagnostic and monitoring tool.

## CCSSE - Benchmarks of Effective Educational Practice



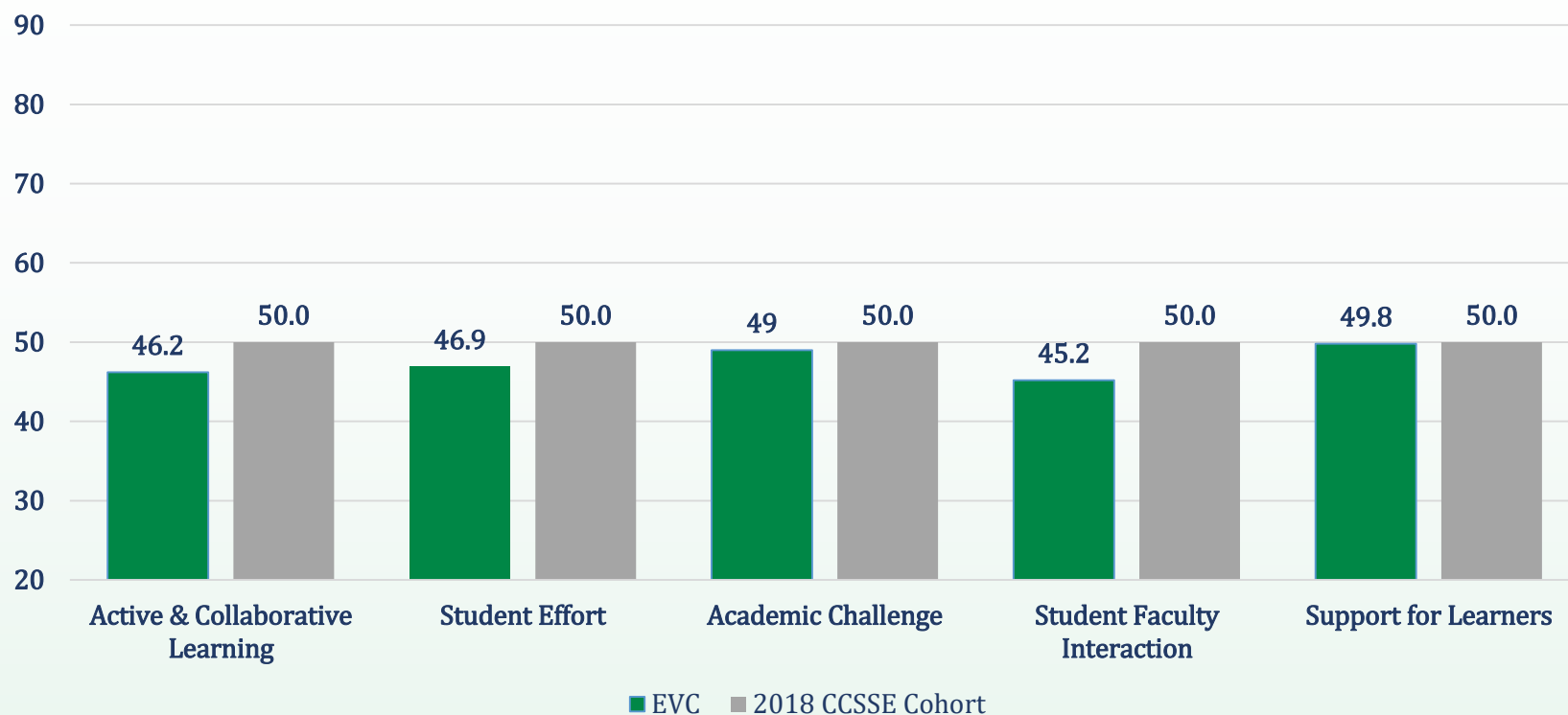
SAN JOSE CITY COLLEGE

**STUDENT ENGAGEMENT**

*Source: 2018 CCSSE Report (San Jose City College)*



## CCSSE - Benchmarks of Effective Educational Practice



# EVERGREEN VALLEY COLLEGE

---

## STUDENT ENGAGEMENT

Source: 2018 CCSSE Report (Evergreen Valley College)

SAN JOSÉ · EVERGREEN COMMUNITY COLLEGE DISTRICT

## FOURTH QUARTER REPORT - RESOURCES

- [2018 Student Success Scorecard](#)
- [2018 Annual Security Report \(SJECCD\)](#)
- [Spring 2017 EEO Plan](#)
- [2018 SJCC CCSSE Report](#)
- [2018 EVC CCSSE Report](#)
- [CCCCO DataMart](#)
- [CCCCO Launchboard](#)



# 1

## STUDENT SUCCESS (Feb. 13, 2018)

*Degree and Certificate Completion, and Transferability*

#	Measurement
1.1	Number of AA, AS, ADT Degrees
1.2	Number of CTE and non-CTE Certificates
1.3	Transfer Level Course Success Rate
1.4	Percent Transfer Prepared
1.5	CSU/UC Acceptance Rates
1.6	Number of Transfers
1.7	Transfer Rate



# 2

## COMMUNITY IMPACT (April 10, 2018)

*Career Development*

#	Measurement
2.1	CTE Success Rate
2.2	CTE Course Completion Rate
2.3	Number of CTE Degrees/Certificates
2.4	Skills Builder Metric
2.5	Employed After Exit
2.6	Job Related to Program of Study
2.7	Median Earnings After Exit/Award
2.8	Success in passing licensing exams



# 3

## COMMUNITY IMPACT (July 10, 2018)

*Community, Business, Industry and Trades Partnerships/Collaborations*

#	Measurement
3.1	Number of Dual Enrollments
3.2	Number of internships/work experience
3.3	Number of apprenticeships
3.4	Number of partnerships/collaborations
3.5	Amount of grant funding
3.6	Amount of fundraising (Foundation)



# 4

## STUDENT SUCCESS (Oct. 9, 2018)

*College Experience and College Readiness*

#	Measurement
<i>College Readiness</i>	
4.1	Completion of Basic Skills
4.2	Remedial Rate for English/Math
4.3	Successful Transfer Level Math/English in Year One
4.4	Students with 12+ units in Year One
<i>College Experience</i>	
4.5	Diversity of staff and faculty
4.6	Employee Satisfaction
4.7	Clery Act reporting
4.8	Student Engagement

# FRAMEWORK FOR QUARTERLY REPORTING

# BOARD'S ENDS POLICY MEASUREMENTS