



SAN JOSÉ · EVERGREEN
Community College District

BI-ANNUAL REPORTING ON BOARD'S ENDS POLICIES

Alice Van Ommeren, EdD | Shusaku Horibe, PhD | Jacqueline Honda, EdD
Institutional Effectiveness, Research and Planning

MAY 14, 2019



SAN JOSÉ · EVERGREEN COMMUNITY COLLEGE DISTRICT

GLOBAL ENDS STATEMENT & POLICIES

GLOBAL ENDS STATEMENT

"The San José · Evergreen Community College District exists to ensure all students, especially those with educational and/or socioeconomic challenges, will have the skills and capabilities to be successful in the next stage of their life, sufficient to justify the use of available resources."

STUDENT SUCCESS

The San José · Evergreen Community College District will improve student success through enhanced educational services and programs and strengthened community engagement.

Included in Student Success:

TRANSFERABILITY

All students, especially under-prepared students, will achieve academic success sufficient to transfer to a four-year post-secondary institution.

COLLEGE READINESS

Students will develop the language skills to succeed in college, the ability to analyze, synthesize, and evaluate information, and will be able to effectively communicate with others and successfully work collaboratively in culturally diverse settings.

COLLEGE EXPERIENCE

Enrichment opportunities will exist to enhance the learning environment and support student success.

DEGREE AND CERTIFICATE COMPLETION

Students will complete degrees and certificates to enter the workforce.

SAN JOSÉ · EVERGREEN COMMUNITY COLLEGE DISTRICT

GLOBAL ENDS STATEMENT & POLICIES

GLOBAL ENDS STATEMENT

"The San José · Evergreen Community College District exists to ensure all students, especially those with educational and/or socioeconomic challenges, will have the skills and capabilities to be successful in the next stage of their life, sufficient to justify the use of available resources."

COMMUNITY IMPACT

As a leader in the Silicon Valley, the San José · Evergreen Community College District will be an active partner with civic and other community leaders to create a strong economy and foster social-economic equity and social justice.

Included in Community Impact:

→ CAREER DEVELOPMENT

Students will acquire skills sufficient to get, keep and progress in jobs with local employers, particularly in high wage/high growth areas, for all students, especially for: under-prepared students; older displaced students; and young people at the start of their careers.

→ COMMUNITY, BUSINESS, INDUSTRY AND TRADES PARTNERSHIPS/COLLABORATIONS

The District will collaborate with business, industry, and the trades for high employment in quality jobs through job placement, internships, mentorships and philanthropic development.



1

STUDENT SUCCESS (Feb. 13, 2018)

Degree and Certificate Completion, and Transferability

#	Measurement
1.1	Number of AA, AS, ADT Degrees
1.2	Number of CTE and non-CTE Certificates
1.3	Transfer Level Course Success Rate
1.4	Percent Transfer Prepared
1.5	CSU/UC Acceptance Rates
1.6	Number of Transfers
1.7	Transfer Rate



2

COMMUNITY IMPACT (April 10, 2018)

Career Development

#	Measurement
2.1	CTE Success Rate
2.2	CTE Course Completion Rate
2.3	Number of CTE Degrees/Certificates
2.4	Skills Builder Metric
2.5	Employed After Exit
2.6	Job Related to Program of Study
2.7	Median Earnings After Exit/Award
2.8	Success in passing licensing exams



3

COMMUNITY IMPACT (July 10, 2018)

Community, Business, Industry and Trades Partnerships/Collaborations

#	Measurement
3.1	Number of Dual Enrollments
3.2	Number of internships/work experience
3.3	Number of apprenticeships
3.4	Number of partnerships/collaborations
3.5	Amount of grant funding
3.6	Amount of fundraising (Foundation)



4

STUDENT SUCCESS (Oct. 9, 2018)

College Experience and College Readiness

#	Measurement
<i>College Readiness</i>	
4.1	Completion of Basic Skills
4.2	Remedial Rate for English/Math
4.3	Successful Transfer Level Math/English in Year One
4.4	Students with 12+ units in Year One
<i>College Experience</i>	
4.5	Diversity of staff and faculty
4.6	Employee Satisfaction
4.7	Clery Act reporting
4.8	Student Engagement

FRAMEWORK FOR QUARTERLY REPORTING

ENDS POLICY MEASUREMENTS

1

STUDENT SUCCESS (May 14, 2019)

*Degree and Certificate Completion, and
Transferability & College Experience and College
Readiness*



#	Measurement
1.1	Number of AA, AS, ADT Degrees
1.2	Number of CTE and non-CTE Certificates
1.3	Transfer Level Course Success Rate
1.4	Percent Transfer Prepared
1.5	CSU/UC Acceptance Rates
1.6	Number of Transfers
1.7	Transfer Rate
<i>College Readiness</i>	
1.8	Completion of Basic Skills
1.9	Remedial Rate for English/Math
1.10	Successful Transfer Level Math/English in Year 1
1.11	Students with 12+ units in Year One
<i>College Experience</i>	
1.12	Diversity of staff and faculty
1.13	Employee Satisfaction
1.14	Clery Act reporting
1.15	Student Engagement

2

COMMUNITY IMPACT (October 8, 2019)

*Career Development & Community, Business,
Industry and Trades
Partnerships/Collaborations*



#	Measurement
2.1	CTE Success Rate
2.2	CTE Course Completion Rate
2.3	Number of CTE Degrees/Certificates
2.4	Skills Builder Metric
2.5	Employed After Exit
2.6	Job Related to Program of Study
2.7	Median Earnings After Exit/Award
2.8	Success in passing licensing exams
2.9	Number of Dual Enrollments
2.10	Number of internships/work experience
2.11	Number of apprenticeships
2.12	Number of partnerships/collaborations
2.13	Amount of grant funding
2.14	Amount of fundraising (Foundation)

FRAMEWORK FOR BIENNIAL REPORTING

ENDS POLICY MEASUREMENTS



Besides SJECCD Boards Ends Policies:

- State Vision for Success metrics/goals
- District/Colleges strategic priorities/goals
- AB 705 initiative evaluation metrics
- Guided Pathways & Equity Plan outcomes
- Scorecard to Student Success Metrics (SSM)
 - Revised methodologies to common metrics
- New “college readiness” metrics in SSM
- “College experience” metrics not updated.

STUDENT SUCCESS MEASURES

Completion, Transfer and College Readiness

1.1 Number of Associate Degrees & Certificate Earners

1.2 Number of Transfers

1.3 Transfer Rate

1.4 CSU/UC Acceptance Rates

1.5 Transfer Level Math/English in Year One

1.6 Twelve+ Units in Year One

College Experience

1.7 Diversity of Staff and Faculty

Measure	Vision for Success Goal	2014-15	2015-16	2016-17 (Baseline)	2017- 18	2021-22 (Goal)
Associate's Degrees		443	388	335	334	
Associate's Degrees for Transfer	Goal 2A	84	140	175	172	237* (+35%)
Chancellor's Office Certificates	Goal 1B	345	348	544	473	653* (+20%)

* SJCC Vision for Success Goal

SAN JOSE CITY COLLEGE

Associate Degrees & Certificate Earners

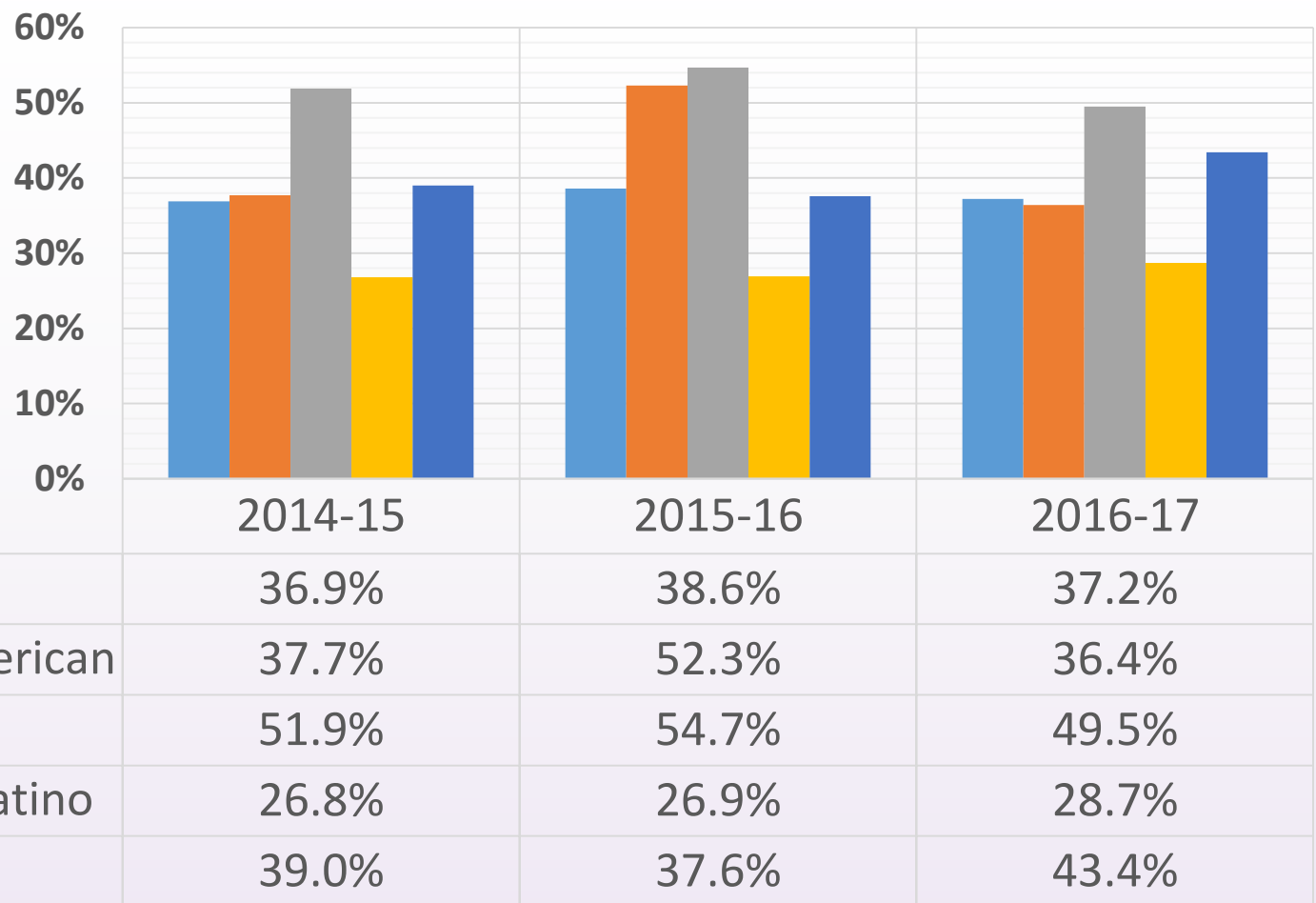
Source: Student Success Metrics (CCCCO)

Measure	2014-15	2015-16	2016-17
Transfer to CSU or UC	696	721	641
Transfer to In-State Private	85	81	85
Earned Associate Degree of Transfer	84	140	175

SAN JOSE CITY COLLEGE

NUMBER OF TRANSFERS

Source: Student Success Metrics (CCCCO)



SAN JOSE CITY COLLEGE

TRANSFER RATE

Source: Data Mart (CCCCO)

Vision for Success Goals	Baseline Year	2017-18	2018-19	Outcome Year*
Associate's Degrees	323	284	294	387*
Associate's Degrees for Transfer	275	358	374	371*
Chancellor's Office Certificates	70	200	202	84*

**Projections for 2021-22 AY, BOLD = Goal already met*

EVERGREEN VALLEY COLLEGE

Associate Degrees & Certificate Awards

Source: Student Success Metrics (CCCCO)

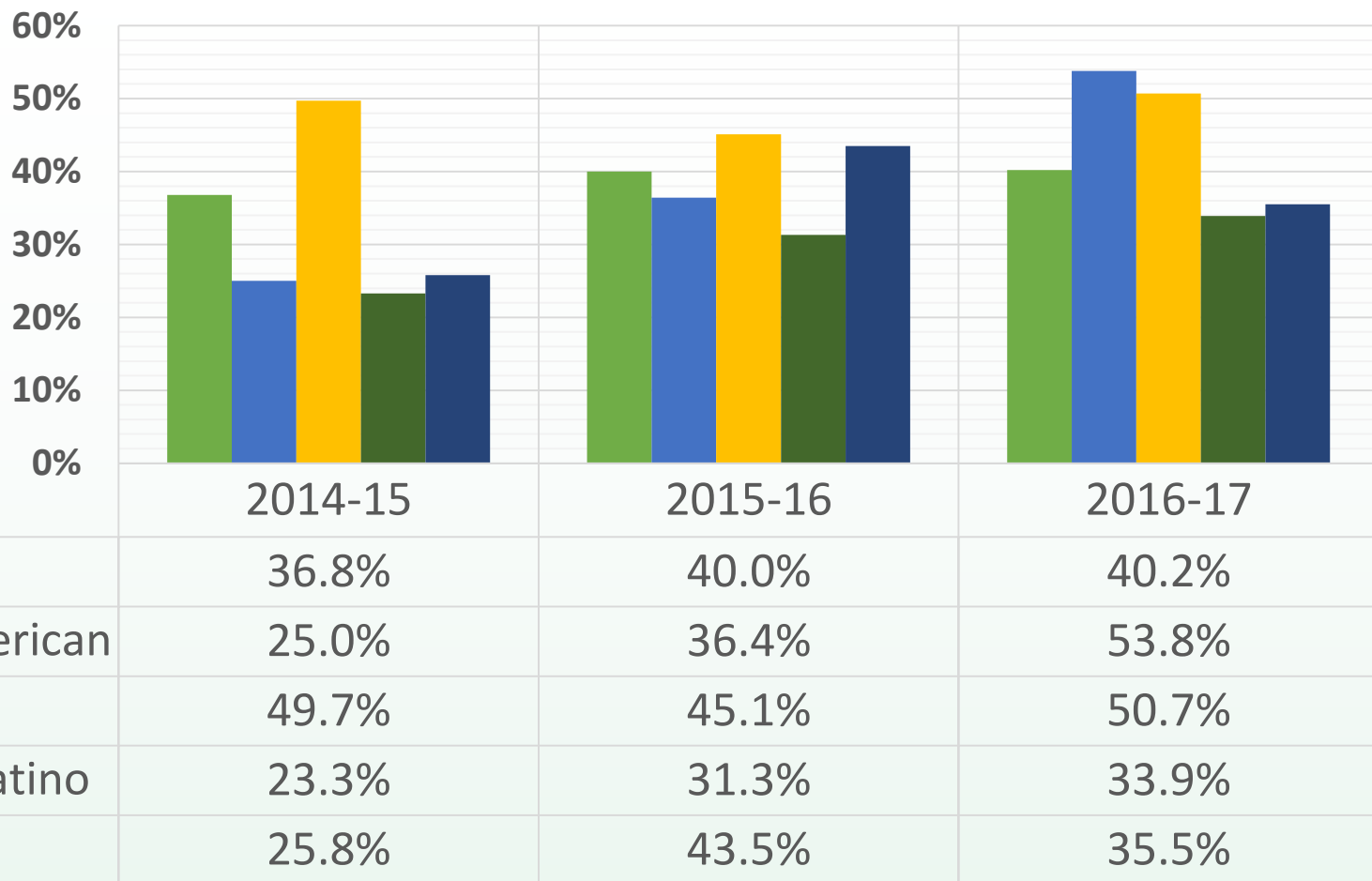
Measure	2014-15	2015-16	2016-17
Transfer to CSU or UC*	767	767	787
Transfer to In-State Private	67	51	71

**Vision for Success Goal*

EVERGREEN VALLEY COLLEGE

NUMBER OF TRANSFERS

Source: Student Success Metrics (CCCCO)



EVERGREEN VALLEY COLLEGE

TRANSFER RATE

Source: Data Mart (CCCCO)

TRANSFERS TO SAN JOSE STATE UNIVERSITY

- As a district, we transferred 560 students in 2017-18 to San Jose State University, an increase of almost 7% from last year.
- Over the past decade, Evergreen Valley College transfers more students to San Jose State University than San Jose City College.
- Most popular programs to transfer for EVC students last year was Accountancy, Psychology and Business Administration.
- For San Jose City College, students tend to choose Management, Accountancy and Sociology at SJSU.

UC ACCEPTANCE RATE

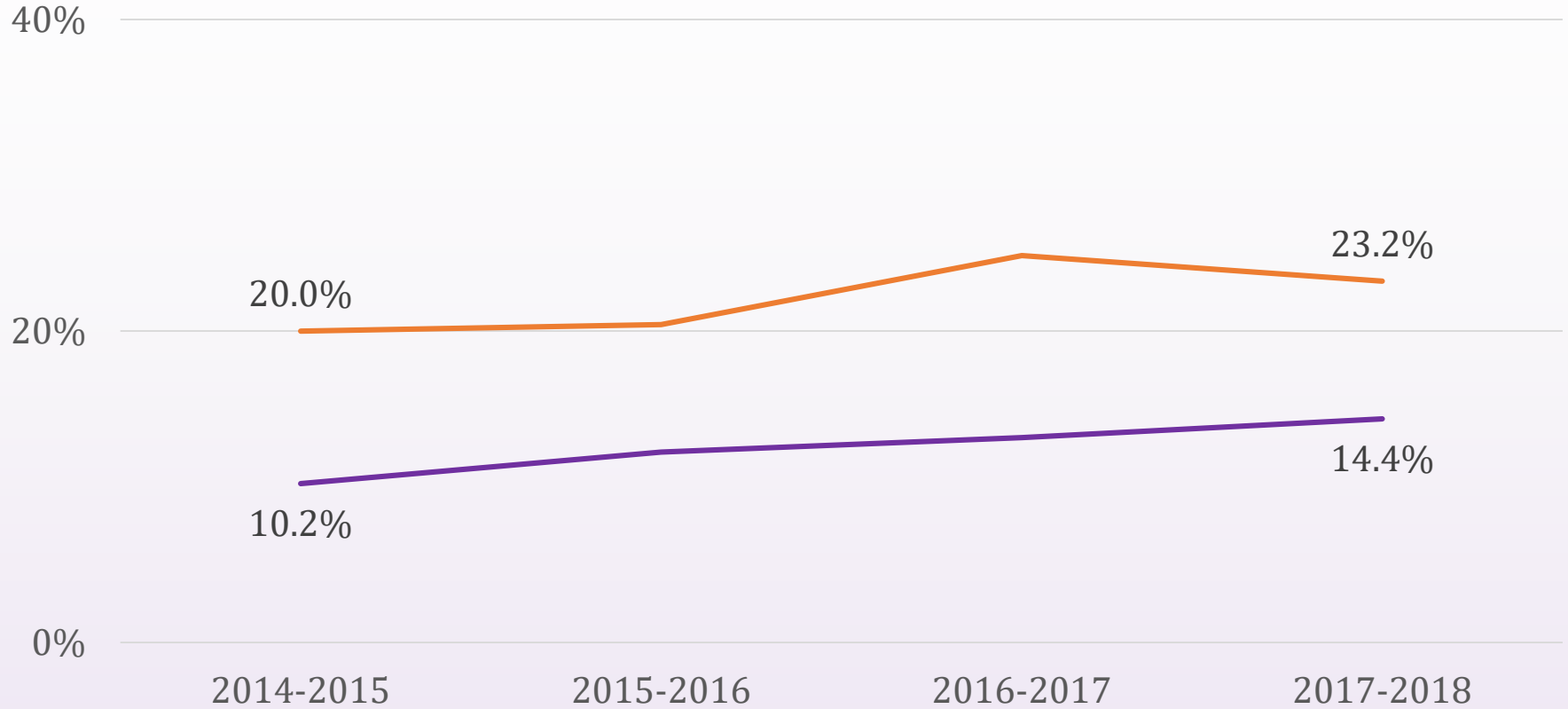
Districts	2013-14	2014-15	2015-16	2016-17	2017-18
Percent of students applied and accepted					
• San Jose-Evergreen CCD	69%	67%	68%	75%	74%
• Foothill-De Anza CCD	74%	74%	70%	76%	78%
• West Valley-Mission CCD	67%	75%	69%	71%	78%

For 2017-18,

- SJECCD has the highest acceptance rates for Asian (85%) and Hispanic (80%) students when comparing to Foothill-DeAnza CCD and West-Valley Mission CCD (74%-77%).
- SJECCD has higher African-American acceptance rate (67%) than Foothill-DeAnza (61%).

Transfer Level Math/English in Year One

— 1-Year MATH — 1-Year ENGLISH



SAN JOSE CITY COLLEGE

TRANSFER LEVEL ACHIEVEMENT RATE

Source: 2018 Student Success Scorecard (CCCCO)

Number of Units Earned	2015-16	2016-17	2017-18
6+ Units in Fall Term	45%	47%	48%
12+ Units in Fall Term	15%	16%	17%
15+ Units in Fall Term	4%	4%	5%
15+ Units in One Year	29%	30%	31%
24+ Units in One Year	11%	11%	13%
30+ Units in One Year	6%	6%	6%

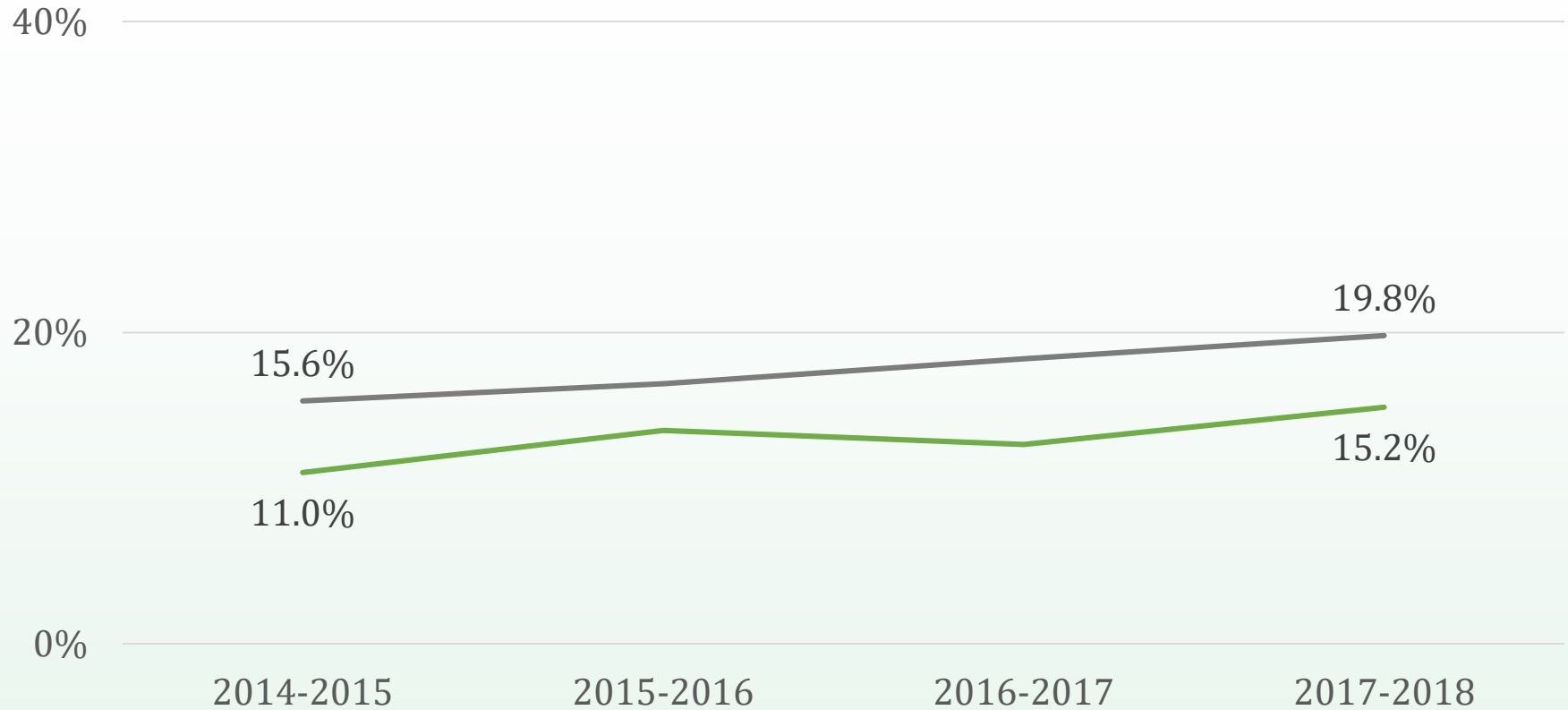
SAN JOSE CITY COLLEGE

SUCCESSFUL UNITS EARNED

Source: Student Success Metrics (CCCCO)

Transfer Level Math/English in Year One

— 1-Year MATH — 1-Year ENGLISH



EVERGREEN VALLEY COLLEGE

TRANSFER LEVEL ACHIEVEMENT RATE

Source: Student Success Metrics (CCCCO)

Number of Units Earned	2015-16	2016-17	2017-18
6+ Units in Fall Term	43%	45%	46%
12+ Units in Fall Term	12%	13%	14%
15+ Units in Fall Term	3%	3%	4%
15+ Units in One Year	28%	28%	30%
24+ Units in One Year	10%	10%	11%
30+ Units in One Year	5%	5%	5%

EVERGREEN VALLEY COLLEGE

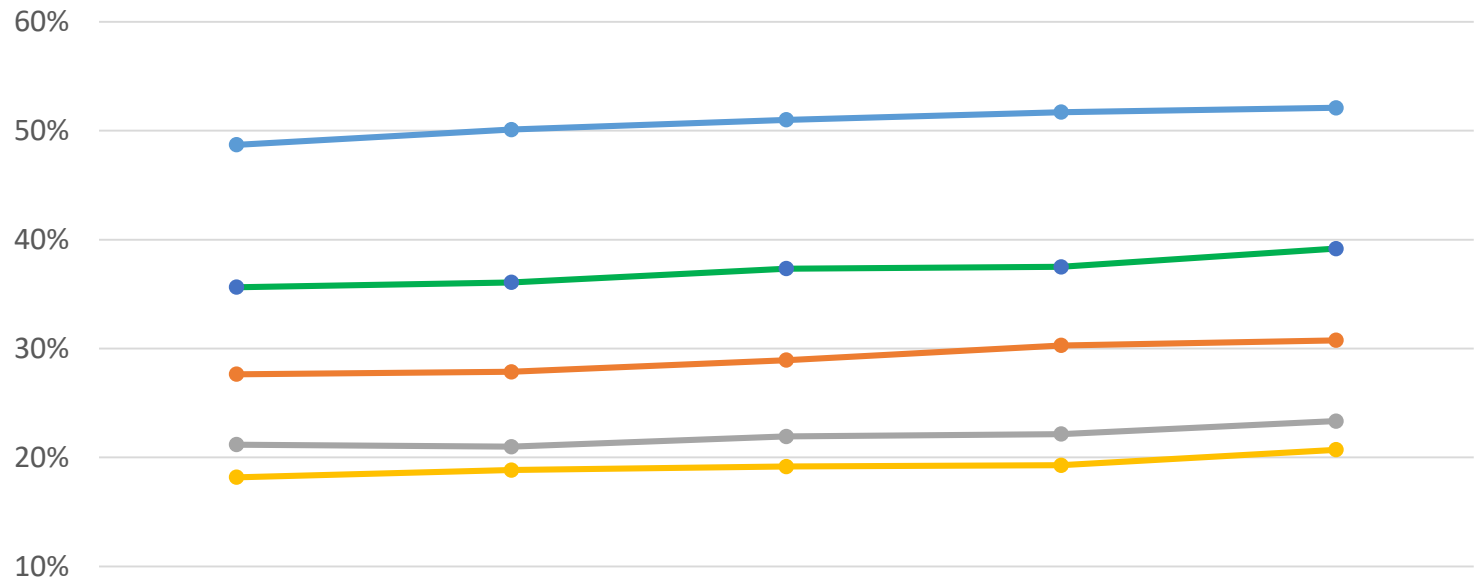
SUCCESSFUL UNITS EARNED

Source: Student Success Metrics (CCCCO)

DIVERSITY OF STAFF AND FACULTY - STATEWIDE

*Under-Represented Minority – African American, American Indian, Hispanic & Pacific Islander

Under-Represented Minority* Percentages by Students and Employee Types (Statewide CCCs)



	Fall 2013	Fall 2014	Fall 2015	Fall 2016	Fall 2017
Students	48.7%	50.1%	51.0%	51.7%	52.1%
Administrators	27.6%	27.9%	28.9%	30.3%	30.8%
Academic Tenured	21.2%	21.0%	21.9%	22.1%	23.3%
Academic Temporary	18.2%	18.8%	19.2%	19.3%	20.7%
Classified	35.6%	36.1%	37.3%	37.5%	39.2%

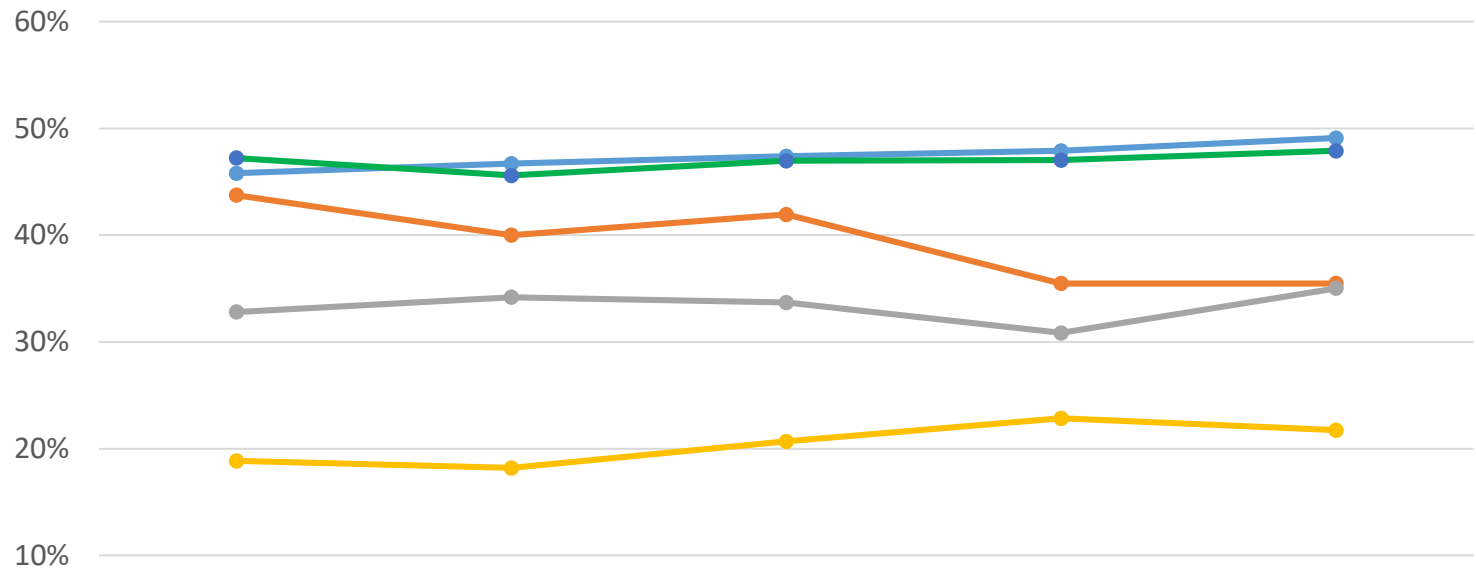


SAN JOSÉ · EVERGREEN COMMUNITY COLLEGE DISTRICT

DIVERSITY OF STAFF AND FACULTY - SJECCD

*Under-Represented Minority – African American, American Indian, Hispanic & Pacific Islander

Under-Represented Minority* Percentages by Students and Employees Types at SJECCD



	Fall 2013	Fall 2014	Fall 2015	Fall 2016	Fall 2017
Students	45.8%	46.7%	47.4%	47.9%	49.1%
Administrators	43.8%	40.0%	41.9%	35.5%	35.5%
Academic Tenured	32.8%	34.2%	33.7%	30.8%	35.0%
Academic Temporary	18.9%	18.2%	20.7%	22.8%	21.7%
Classified	47.2%	45.6%	47.0%	47.0%	47.9%