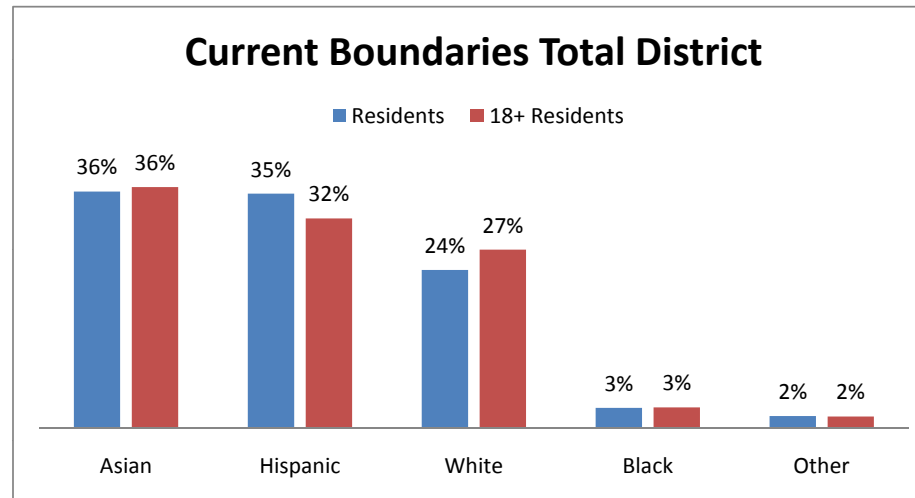


# San Jose Evergreen Community College District

Current Boundaries  
2010 Census Data

**Balanced Districts (by Residents) 119,359**

	Residents	%	18+ Residents	%
<b>Total Population</b>	<b>835,511</b>	<b>100%</b>	<b>627,191</b>	<b>75%</b>
<b>White</b>	199,771	24%	169,175	27%
<b>Hispanic</b>	296,073	35%	198,740	32%
<b>Black</b>	25,630	3%	19,693	3%
<b>Asian</b>	298,622	36%	228,452	36%
<b>Other</b>	15,415	2%	11,131	2%



### CURRENT DISTRICTS

Balanced Districts = 119,359 Residents  
(Map C1)

Must Shrink

1  
121400  
2,041  
1.71%

Must Shrink

3  
131604  
12,245  
10.26%

Must Grow

2  
108078  
-11,281  
-9.45%

Balanced

7  
119673  
314  
0.26%

Must Shrink

6  
124615  
5,256  
4.4%

Must Grow

4  
107341  
-12,018  
-10.07%

Must Shrink

5  
122800  
3,441  
2.88%

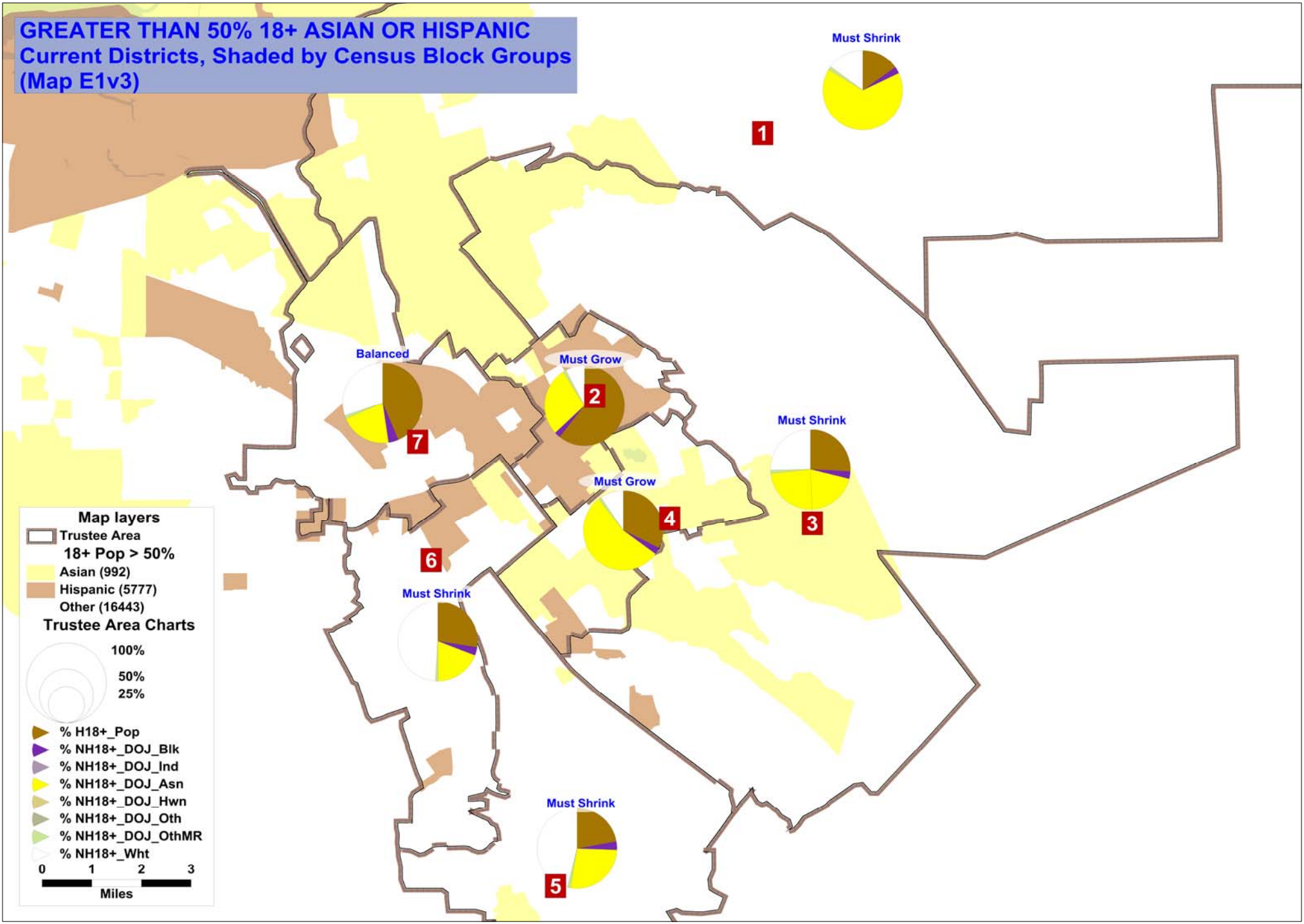
District Legends	
5	-----> Trustee Area
122,800	-----> Current Residents
3,441	-----> Over (under) Balanced Size
2.88%	-----> % Over (under)

#### Map layers

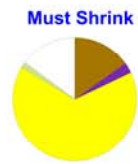
Trustee Area



**GREATER THAN 50% 18+ ASIAN OR HISPANIC**  
**Current Districts, Shaded by Census Block Groups**  
**(Map E1v3)**



1



Balanced



6

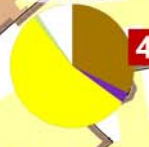


Must Grow



2

Must Grow



4

Must Shrink



3

Must Shrink

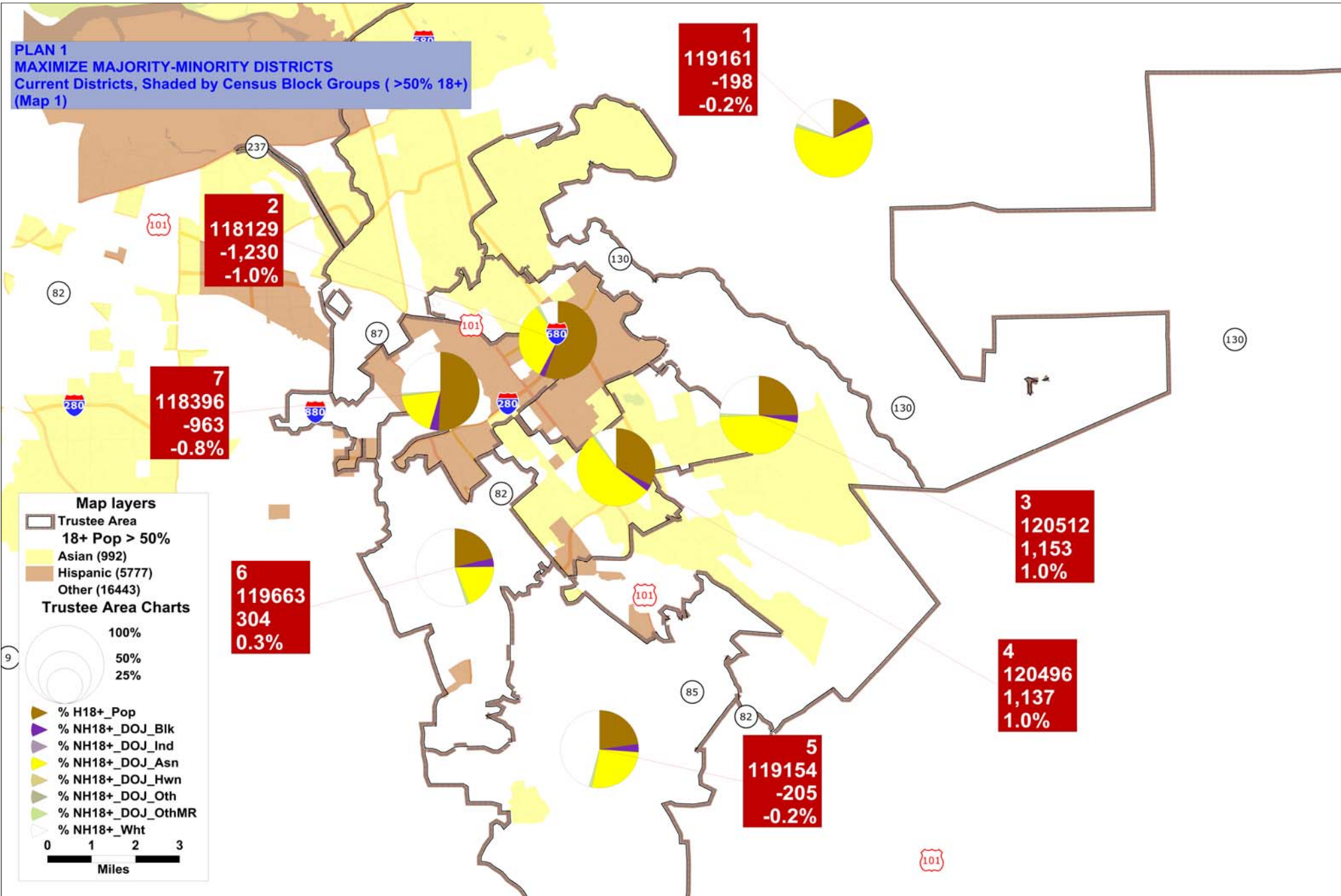


5





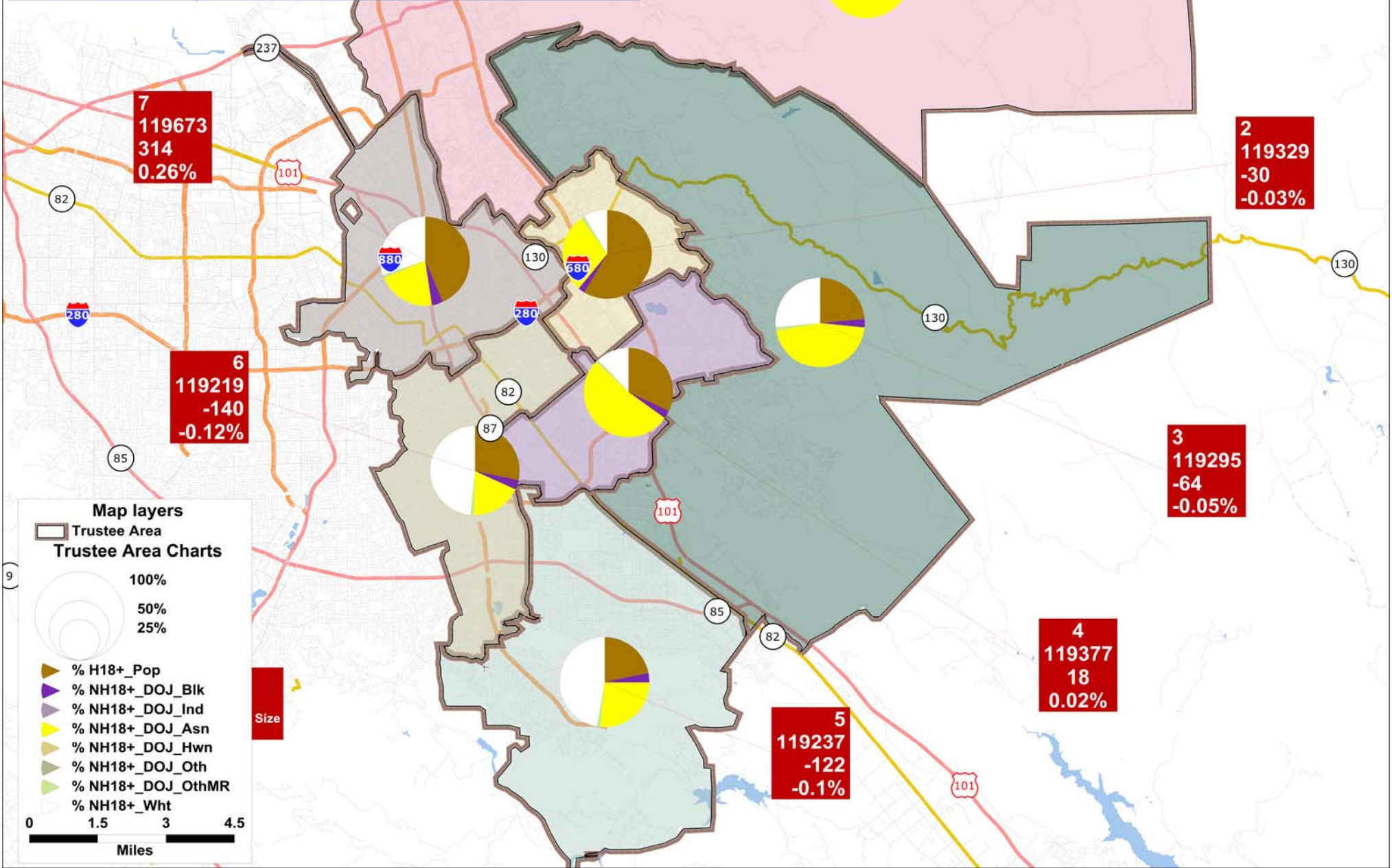
**PLAN 1**  
**MAXIMIZE MAJORITY-MINORITY DISTRICTS**  
 Current Districts, Shaded by Census Block Groups (>50% 18+)  
 (Map 1)



**MINOR ADJUSTMENTS TO CURRENT DISTRICTS TO BALANCE POPULATION**

Plan 2  
 Evergreen Community College District  
 (Map 2)

- Grow 2 North into 1 and Northeast into 3
- Grow 4 South into 3 and Southwest into 5
- Grow 5 North into 6



**1**  
 119381  
 22  
 0.02%

**2**  
 119329  
 -30  
 -0.03%

**3**  
 119295  
 -64  
 -0.05%

**4**  
 119377  
 18  
 0.02%

**5**  
 119237  
 -122  
 -0.1%

**7**  
 119673  
 314  
 0.26%

**6**  
 119219  
 -140  
 -0.12%

**Map layers**

- Trusted Area

**Trustee Area Charts**

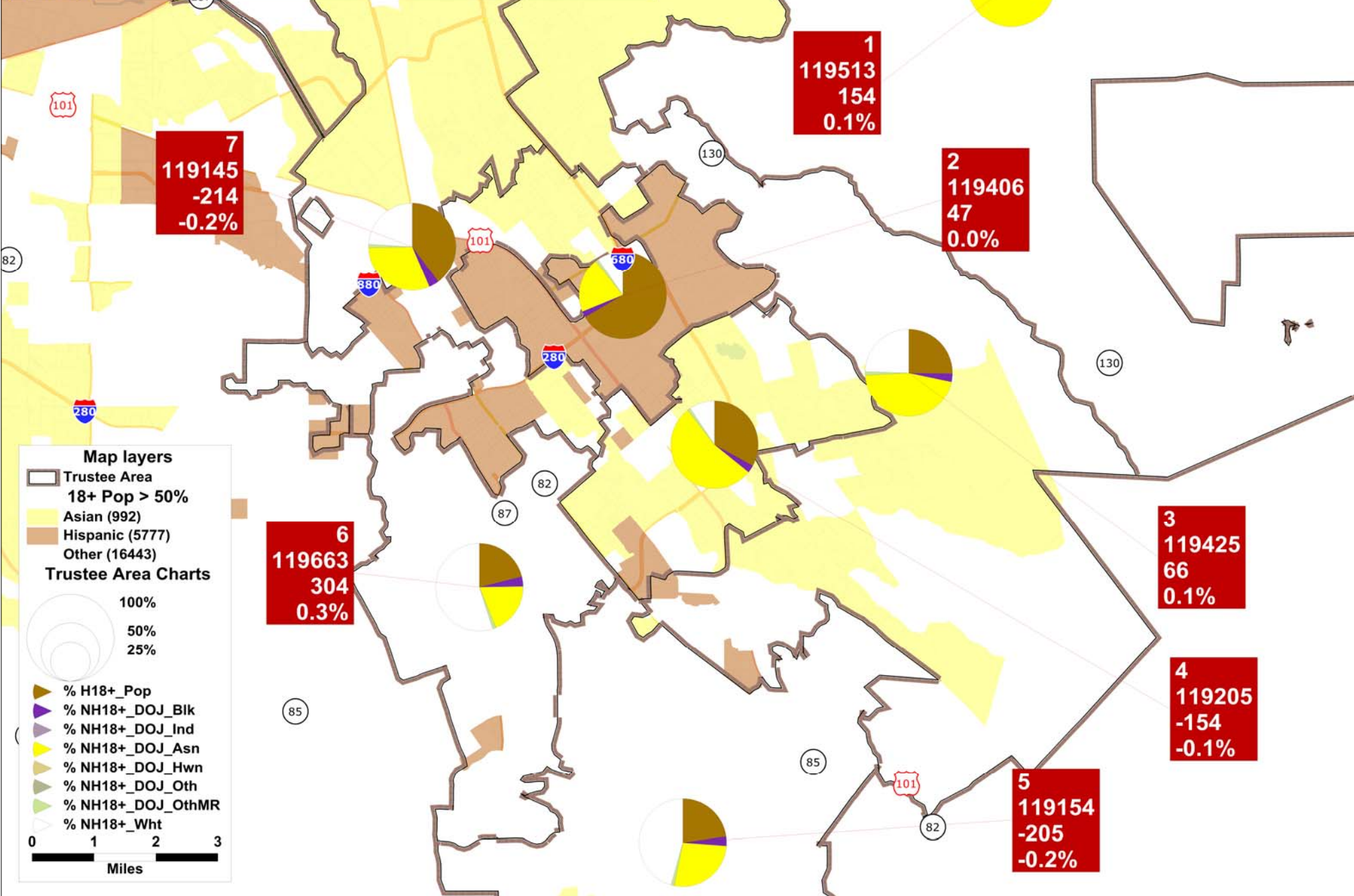
- 100%
- 50%
- 25%

- % H18+\_Pop
- % NH18+\_DOJ\_Blk
- % NH18+\_DOJ\_Ind
- % NH18+\_DOJ\_Asn
- % NH18+\_DOJ\_Hwn
- % NH18+\_DOJ\_Oth
- % NH18+\_DOJ\_OthMR
- % NH18+\_Wht

**Size**

0 1.5 3 4.5  
 Miles

**PLAN 3**  
**CONCENTRATE HISPANICS IN ONE DISTRICT**  
 (Shading is race/ethnicity of 18+ >50% by census block group)  
 (Plan 3)



**7**  
**119145**  
**-214**  
**-0.2%**

**1**  
**119513**  
**154**  
**0.1%**

**2**  
**119406**  
**47**  
**0.0%**

**6**  
**119663**  
**304**  
**0.3%**

**3**  
**119425**  
**66**  
**0.1%**

**4**  
**119205**  
**-154**  
**-0.1%**

**5**  
**119154**  
**-205**  
**-0.2%**

**Map layers**

- Trusted Area
- 18+ Pop > 50%**
- Asian (992)
- Hispanic (5777)
- Other (16443)

**Trustee Area Charts**

- 100%
- 50%
- 25%

- % H18+ Pop
- % NH18+ DOJ\_Blk
- % NH18+ DOJ\_Ind
- % NH18+ DOJ\_Asn
- % NH18+ DOJ\_Hwn
- % NH18+ DOJ\_Oth
- % NH18+ DOJ\_OthMR
- % NH18+ Wht

0 1 2 3  
 Miles